

Team Discovery



Enabling **Visions – helping leaders and teams succeed**

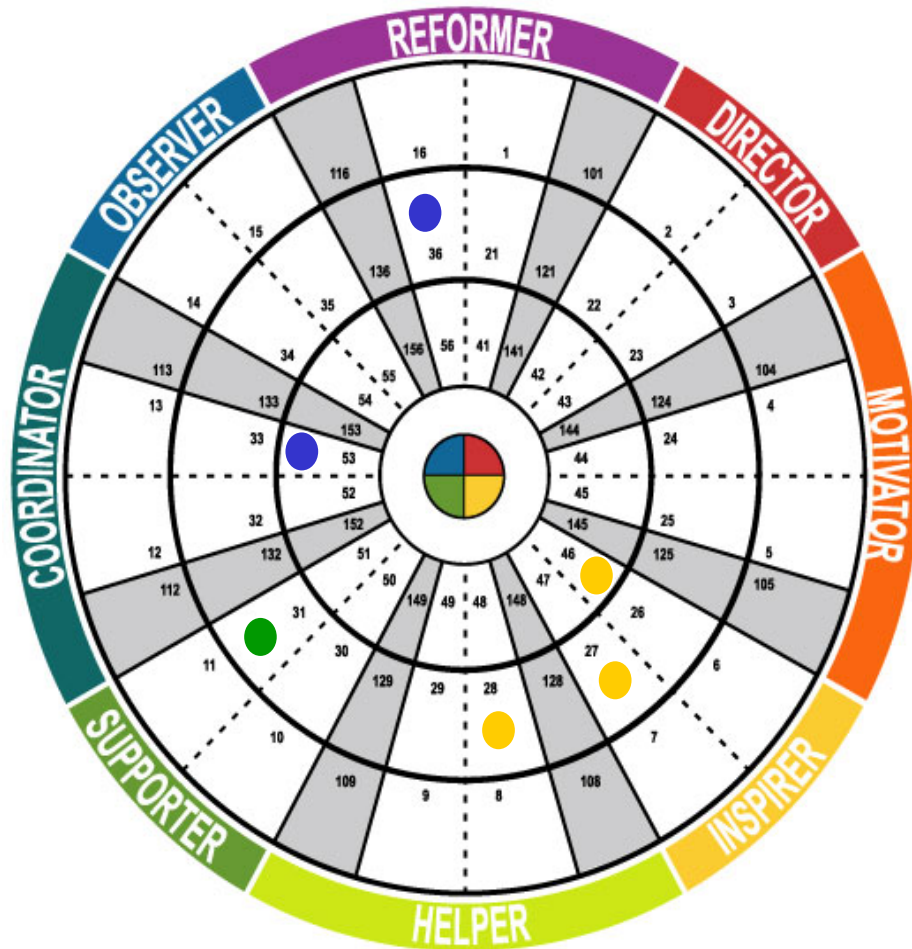
1 Friary Temple Quay Bristol BS1 6EA

T: +44 (0) 117 344 5009 F: +44 (0) 117 344 5186

Visit our web site today: www.enablingvisions.com

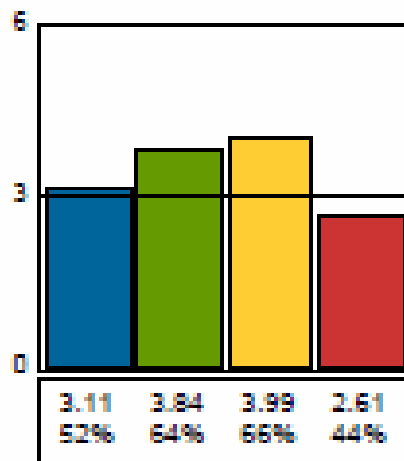
Enabling Visions Ltd is a registered UK Company, Registration number: 4238778

Team Wheel

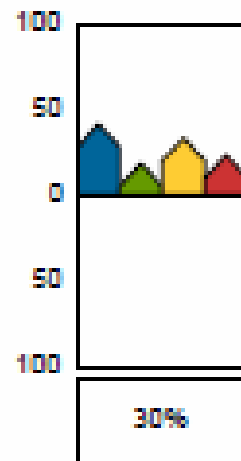


Team DNA

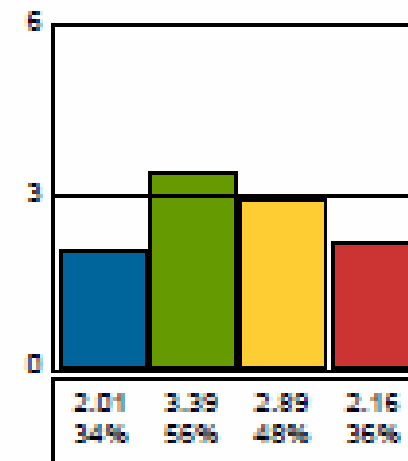
Conscious Composite



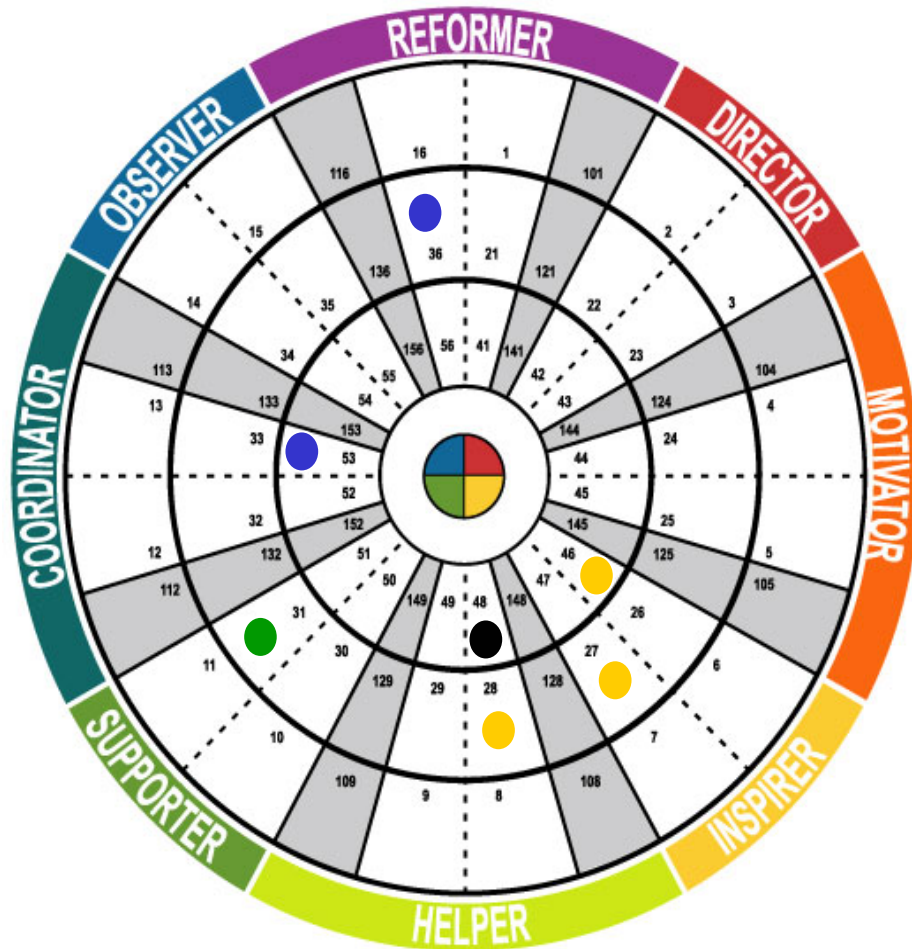
Preference Flow



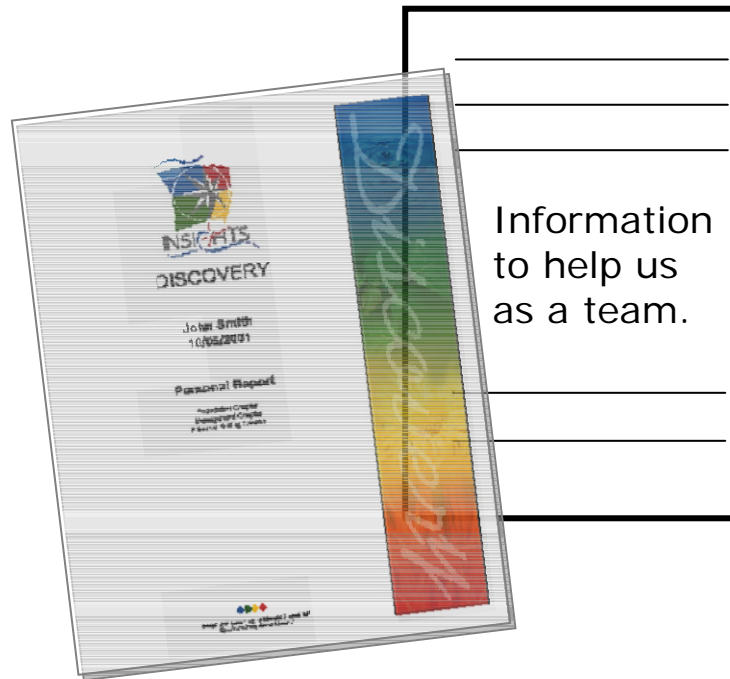
Less Conscious Composite



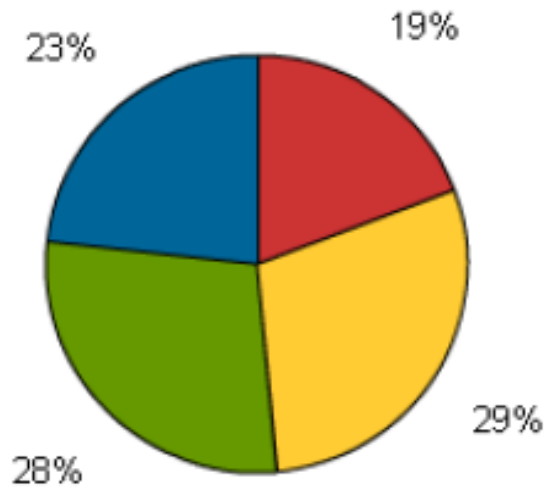
Team Wheel Position



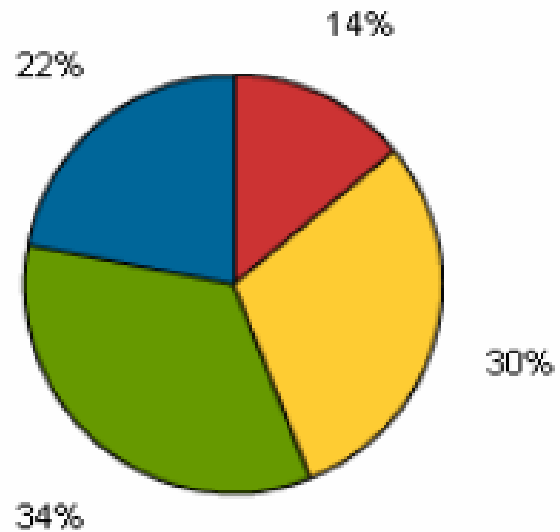
Team Report – See word doc also attached



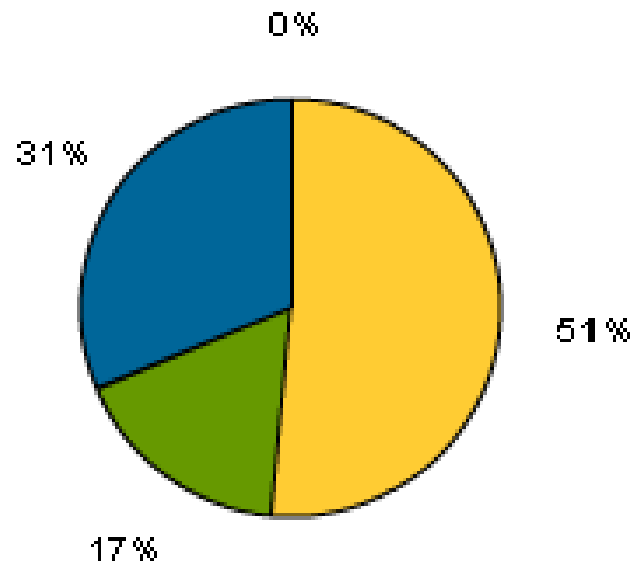
Aggregated Team Energy...



Above the line use of energy by the team...



Primary Energy only...



Perceived strengths of this team...

- Gives and receives trust.
- Approachable and affectionate with colleagues.
- Happy to serve and help others.
- Looks for the harmony in every situation.
- Lives in and for the moment.
- Accommodating and will provide help where needed.
- Can act spontaneously.
- Respectful of others needs.
- Innovative counsellor.
- Has an outgoing nature and builds relationships quickly.

Perceived weaknesses of this team...

- Overly concerned with the opinions of others.
- Becomes obstructive if hurt.
- Over-compliant and easily led.
- Gives much credence to others emotive views.
- Answers the question before it has been asked.
- Can be overly sensitive or caring.
- Finds it difficult to say “no” if relationships are being threatened.
- Does not enjoy working or being alone for long periods.
- Was once indecisive, but is not so sure now!
- Often fails to delegate, or delegates too little.

As a team you work in a way that...

- seeks the satisfaction in most things.
- always busy and involved.
- provides a sharp and quick opinion.
- brings a friendly, calming and stabilising influence.
- is sympathetic to the needs of others.
- brings harmony rather than conflict.
- meets the needs of the organisation by being prepared to do anything.
- ensures you are always ready to offer service to colleagues.

Areas to consider for Development...

- Solving problems more slowly and methodically.
- Sticking to the to-do list.
- Making sure you have the time to meet your agreed commitments.
- Demanding the same exacting standards of others that they set themselves.
- A more dispassionate and objective outlook.
- Adopting a no-nonsense approach.
- Responding to logic even if someone is likely to get hurt in the process.
- Spotting digressions and irrelevancies in relating with others.
- Not expecting others to always share their optimistic stance.